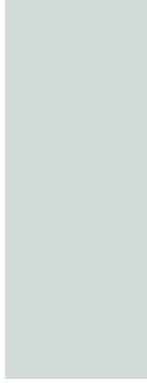
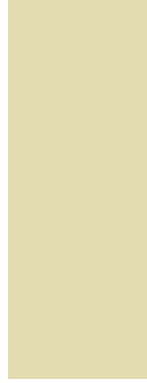




Galvalume  
TSR 25%



Polar White  
TSR 64%



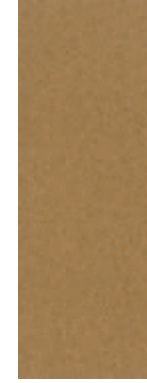
Ivory  
TSR 66%



Light Stone  
TSR 56%



Mocha Tan  
TSR 47%



Metallic Copper  
TSR 49%



Forest Green  
TSR 28%



Evergreen  
TSR 35%



Patina Green  
TSR 28%



Ash Gray  
TSR 46%



Dark Gray  
TSR 37%



Charcoal  
TSR 29%



Clay  
TSR 42%



Hawaiian Blue  
TSR 31%



Gallery Blue  
TSR 35%



Barn Red  
TSR 36%

## 26 & 29 GA Exposed Fastener Panels



**CORE DEFENDER**  
paint system®

### ABOUT THIS PAINT SYSTEM

Tri County Metals roll forms metal roofing from our Core Defender paint system®. Our Core Defender paint system® offers superior color stability, chalk resistance, fade resistance, and gloss retention.

Weathering performance of our Core Defender paint system® is proven through extensive South Florida testing to be superior to standard silicone modified polyester finishes used throughout the metal construction industry.



877-766-3309



TriCountyMetals.com



Serving  
Florida & Georgia



PROUDLY FINISHED WITH  
**SHERWIN-WILLIAMS**  
Coil Coatings



TSR % is the Total Solar Reflectance, the amount of heat reflected by the coated steel. Most colors available in 29 Gauge and 26 Gauge. Call for availability. Actual colors may vary from samples shown. Actual color chips available upon request.

TCM March 2020

Black  
TSR 31%



Bronze  
TSR 34%



Cocoa Brown  
TSR 35%



Burgundy  
TSR 29%



Patriot Red  
TSR 31%





Offering these colors  
for our exposed  
fastener panels in  
29 and 26 GA

### Why TCM?

We offer the very best product, at the best prices, with timely service with pick-up or delivery. Let us help you with your project.

- ✓ Color Choices
- ✓ Trims
- ✓ Product Approvals
- ✓ Accessories
- ✓ CAD Services
- ✓ Solid Warranty

### Need Financing? We can help!



### Ultra Rib



### PBR

(26 GA only)



### Contractor? Get the EDGE!



### TCM contractor'sEDGE™

METAL ROOFING INSTALLATION TRAINING  
Ask your salesperson about our factory training program that will cover not only time-saving, proper install techniques, but also expanded product knowledge, and sales and marketing topics; all with the goal of helping you grow!



LET'S PUT AN ESTIMATE TOGETHER

**877-766-3309**